

Catalogue of Products

Life is the inspiration for our lifts



Right for you



Thanks to more than forty years dedicated to this sector, Eninter is today able to offer the best and most competitive solutions demanded by our industry, offering the market very high quality products which have been created and developed at our facilities by a highly specialised team. As a result, our work has the approval of renowned architects and builders, giving satisfaction to the millions of users who daily use and enjoy the quality and convenience that our products provide. Effort and vocation that allows us to meet the challenge to excel at what we do every day.

A handwritten signature in black ink, appearing to read 'Damaso Martinez', written over a horizontal line.

Dámaso Martínez

Figures that show our vocation to excel

Eninter's history is a story of constant improvement. The figures below are a true reflection of this vocation that has propelled Eninter to become one of the leading companies in the sector.

1,973

proven experience

10,000

lifts
newly installed

1,600

renovation projects

525

professionals working
for you

10,000m²

of our own factory floor

€ 50,000,000

in turnover

€ 500,000 I+D

invested annually

**9001-9002
14001**

total quality

Solutions to address the most diverse needs

Eninter offers the most diverse solutions, designed to meet the needs of today's demanding world. Eninter researches, creates and designs products that are environmentally friendly and committed to people's comfort and well-being.



New constructions

6-9



Heavy loads

10



Accessibility

11



Escalators and moving walkways

12-13



Renovations

14-17



Complete overhauls

18-21



Cabins and accessories

22-33



Home lifts

31



Access Prox

33



Technical features

38-42

New constructions



Ivan Mañero Clinic. Barcelona.

Eninter, the right project for you

At Eninter, architects and builders will always find the model of lift that best suits their needs, knowing that all of them will offer the convenience that users require today.

Eninter products are renowned for their high quality, excellent design and safety.



"The reason I always turn to Eninter is for the peace of mind that I get from knowing that I will find the all-round solution that best adapts to my projects."

Guillermo Muñoz - Architect

A solution for every need

Lifts have been installed in the most diverse spaces and for all types of uses and activities. Eninter meets these new needs with products and designs that are among the most effective around today.



Service lifts

- Max. speed up to 1 m/sec
- Nominal load up to 6,000 kg
- Chain suspension
- Distance up to 30 m
- Standard pit 1,200 mm



Car lifts

- Max. speed up to 0.5 m/sec
- Nominal load up to 5,000 kg
- Cable/chain suspension
- Distance up to 20 m
- Standard pit 1,200 mm



Bed lifts

- Max. speed up to 1.2 m/sec
- Nominal load from 1,000 to 1,600 kg
- Suspension 2:1
- Distance up to 30 m
- Standard pit 1,200 mm



Loading platform

- Max. speed up to 0,2 m/s
- Nominal load up to 10.000 kg
- Suspension Chains
- Distance up to 12 m.
- Standard pit 150 mm.

Goal: Accessibility

Our main challenge is to eliminate barriers, facilitate mobility and minimise effort.

To achieve this, Eninter also offers: Platforms for the disabled, Circular stair lifts, Linear stair lifts, Dumbwaiters, etc.



Vertical Stair Lift Platforms

- Max. speed up to 0.15 m/sec
- Nominal load up to 400 kg*
- Distance up to 3 m
- Single-phase 220 V supply
- Consumption 0.6 to 1 kWh



Circular Stair Lift Platforms

- Max. speed from 0.10 to 0.15 m/sec
- Nominal load up to 250 kg
- Usable distance up to 20 m
- Single-phase 220 V supply
- Consumption 1 kWh



Linear Stair Lift Platforms

- Max. speed up to 0.08 m/sec
- Nominal load up to 250 kg
- Usable distance up to 20 m
- Single-phase 220V supply
- Consumption 0.75 kWh
- Up to 250 kg with an incline of up to 45° and up to 200 kg for a steeper incline



Chair Lifts

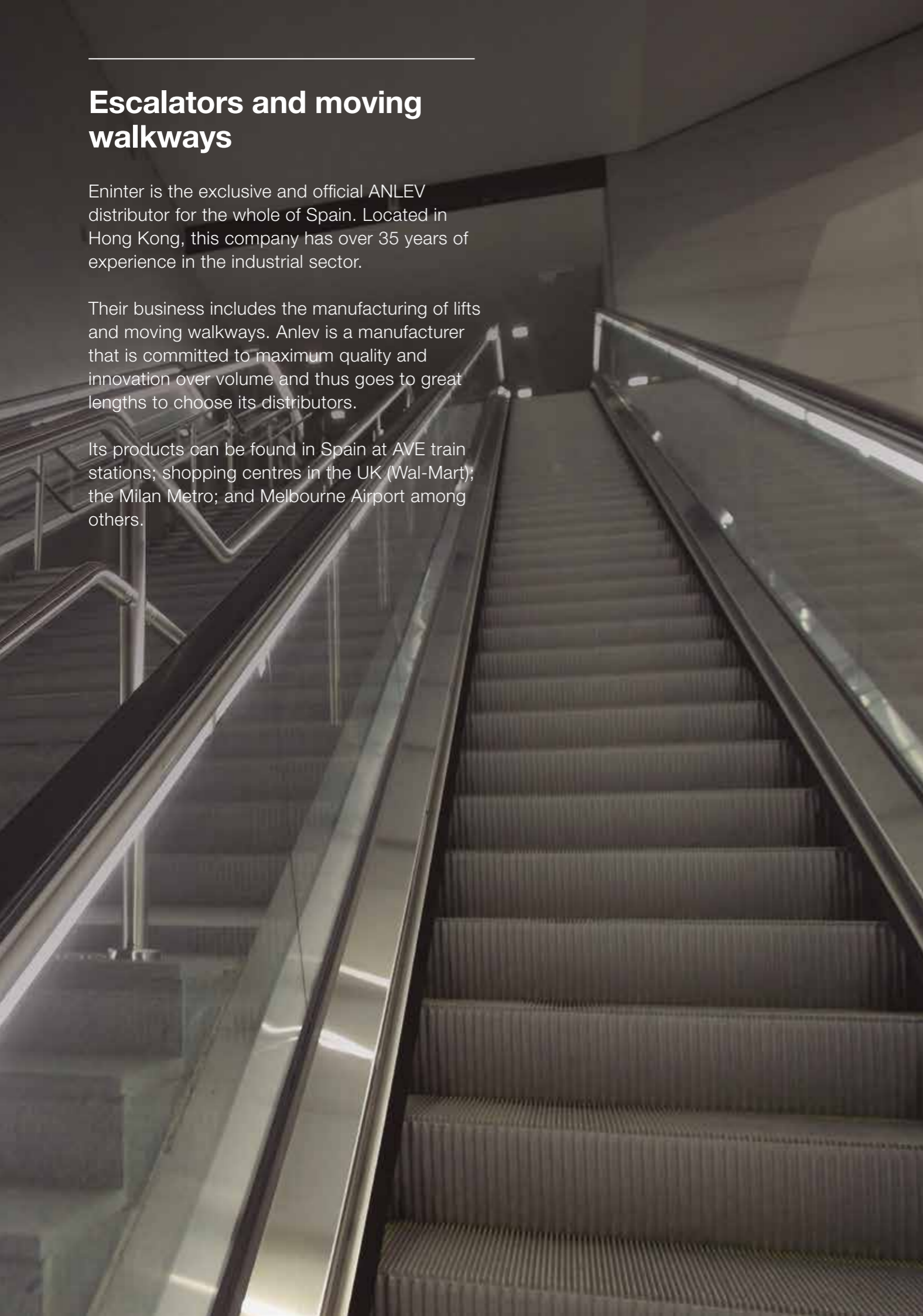
- Max. speed up to 0.08 m/sec
- Nominal load up to 130 kg
- Usable distance up to 40 m
- Single-phase 220 V supply
- Consumption 0.7 kWh

Escalators and moving walkways

Eninter is the exclusive and official ANLEV distributor for the whole of Spain. Located in Hong Kong, this company has over 35 years of experience in the industrial sector.

Their business includes the manufacturing of lifts and moving walkways. Anlev is a manufacturer that is committed to maximum quality and innovation over volume and thus goes to great lengths to choose its distributors.

Its products can be found in Spain at AVE train stations; shopping centres in the UK (Wal-Mart); the Milan Metro; and Melbourne Airport among others.



Automated pedestrian overpass

This is the most innovative and original solution to address pedestrian mobility needs. It allows obstacles such as roads, railways and waterways to be bridged safely, thus solving problems of space. It reduces construction costs and the time needed for the execution of construction work.



**Buildings without lifts
Renovations**



4 different solutions for the renovation of buildings

1. Installation of the lift on the façade of the building itself.



"Eninter suggested this idea and the result is fantastic. It is a very convenient solution and from an aesthetic stand-point is great."

Ana Martín - A neighbour in the building

2. Using the stairwell.



"Eninter's people suggested putting the lift in the stairwell. It was the best solution and it looks as if the lift has always been here."

Manuel Suarez - A neighbour in the building

3. Installation of the lift in the light well.



"Eninter suggested the best solution was to use the light well. I can now say that this was a great decision. We soon had a lift and still have it today!"

Julio Pérez - President of the owners' association

4. Removing the stairs.



"It was clear that we had to install a lift in the building and Eninter's project study included the idea of the demolition of the stairs. To be honest, it all went really smoothly. They met the deadlines and today we enjoy the use of a lift."

Raúl Jiménez - A neighbour in the building

Eninter, the renovation specialists

Eninter offers the most comprehensive renovation plan for your lift, from the start of the project to the very end.

Eninter thus makes the following available:

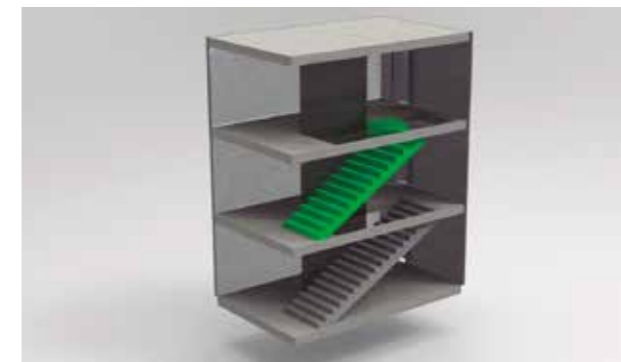
- Management of subsidies and permits.
- Its own financing plan.
- Customised solutions and designs.
- Less than 4 months from the reception of the permits.



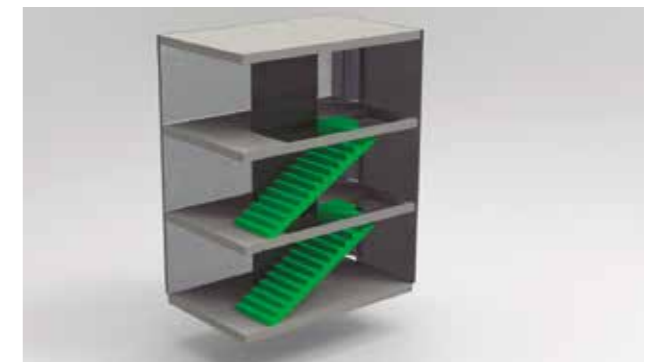
PHASE 1 Initial situation.



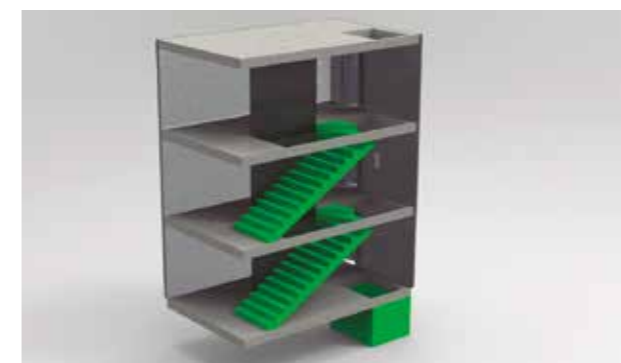
PHASE 2 Demolition of the first section of the stairs without the neighbours having to leave their homes. The neighbours will be informed of the length of time they are without stairs (4 hours).



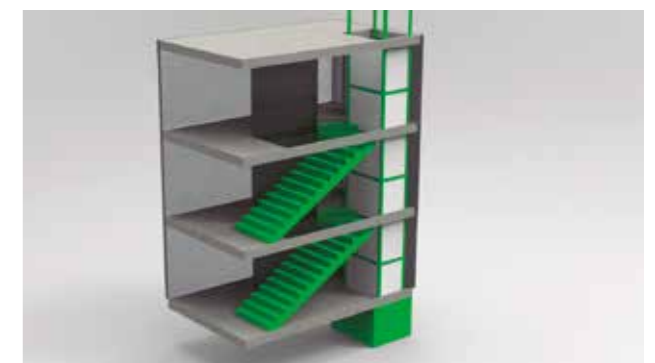
PHASE 3 Assembly of the pre-assembled stairs so that the neighbours who have gone out in the morning can return home at midday.



PHASE 4 Demolition of the existing stairs and assembly of a flight of pre-assembled stairs.

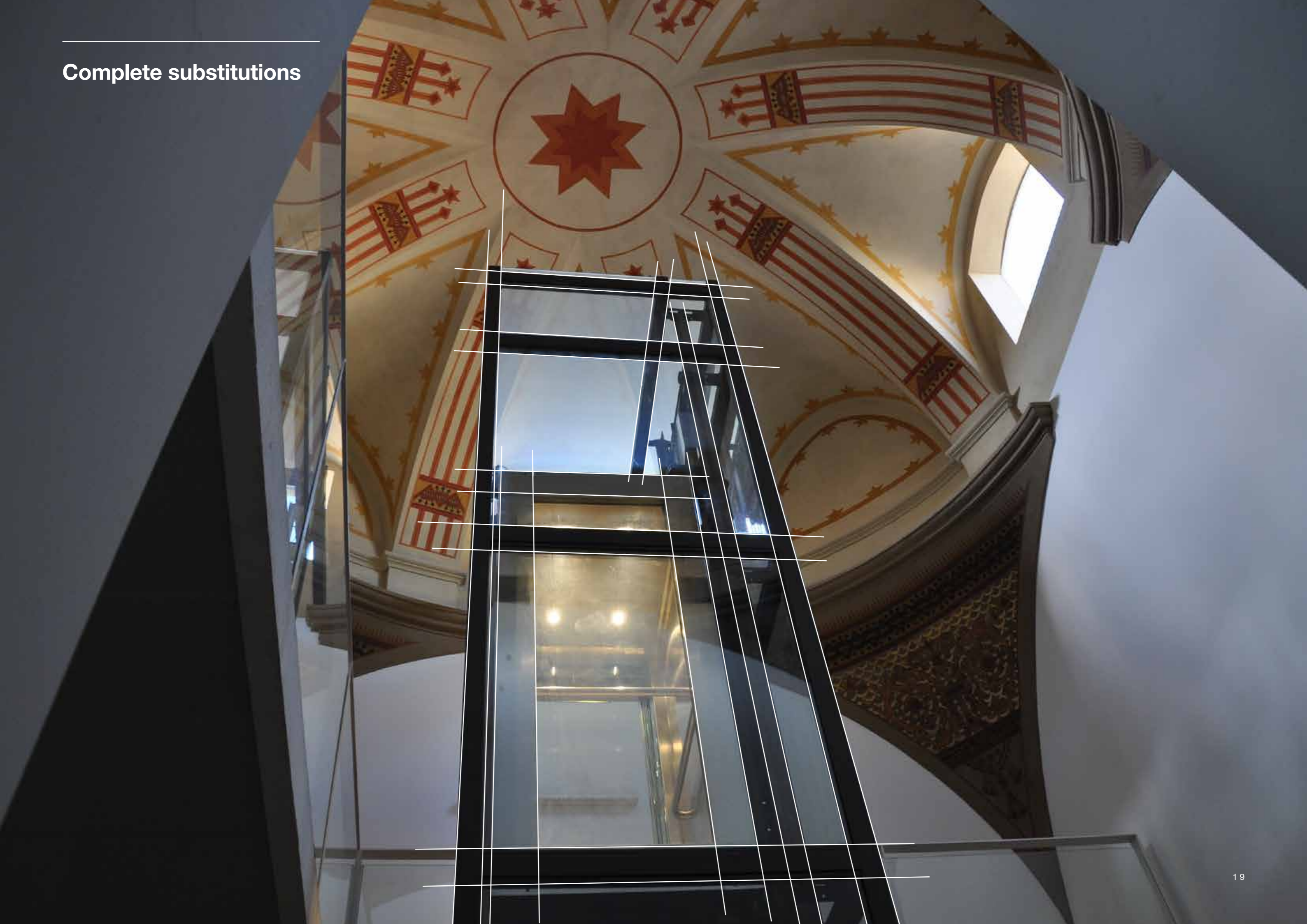


PHASE 5 Creation of the lift shaft and door openings.



PHASE 6 Encasement of the shaft. Carpentry work to finish the stairs and add finishing touches. Installation of the lift itself.

Complete substitutions



Eninter offers you every advantage to enjoy a brand new lift

Over time, many resident communities see the need to modernise or substitute their lifts. Eninter always finds the most efficient and viable solutions.

To do so, it relies on:

- Its own engineering and project office.
- Customised and personal solutions.
- Its own manufacturing and design.
- 100% Spanish technology.
- A 2-year guarantee.
- Its own financing plan.

Possible solutions:



Biglift

A unique opportunity for increasing the size of the cabin. Without altering the current shaft size, we can install a lift with the largest floor area on the market thanks to facing cabin rails and a counterweight. This allows the space for the mechanism to be minimised, thus maximising cabin space. Cabin depth is optimised thanks to rucksack cabin frame technology. A renovation that increases space and comfort.

- Allows the elimination of the machine room.
- Energy savings and reduced CO₂ emissions, eliminating the gear reducer and the need for lubricating oils (contaminants).



Having the lift on the ground floor

Lifts are used so that stairs can be avoided. Eninter offers solutions for access to lifts without the need to go up a single stair. Installation of the lift on the ground or top floor. Access the lift from the street with no architectural barriers. Eninter can take care of the entire project: application for permits, carpentry, locksmiths, electrical work, paintwork, etc. We study each case and prepare a customised project.



Complete overhauls

Substitute your old lift for a new generation one. We completely dismantle your old lift and replace it with one that best suits your needs. Choose from a range of new cabins that will improve the look of your stairs.

Cabin design

Eninter offers a wide range of cabins – all designed at our facilities – to allow you to find the best one to suit your needs. Our customised finishes can be applied to any Eninter lift model.

New York

Inspired by the personality of the city of skyscrapers.

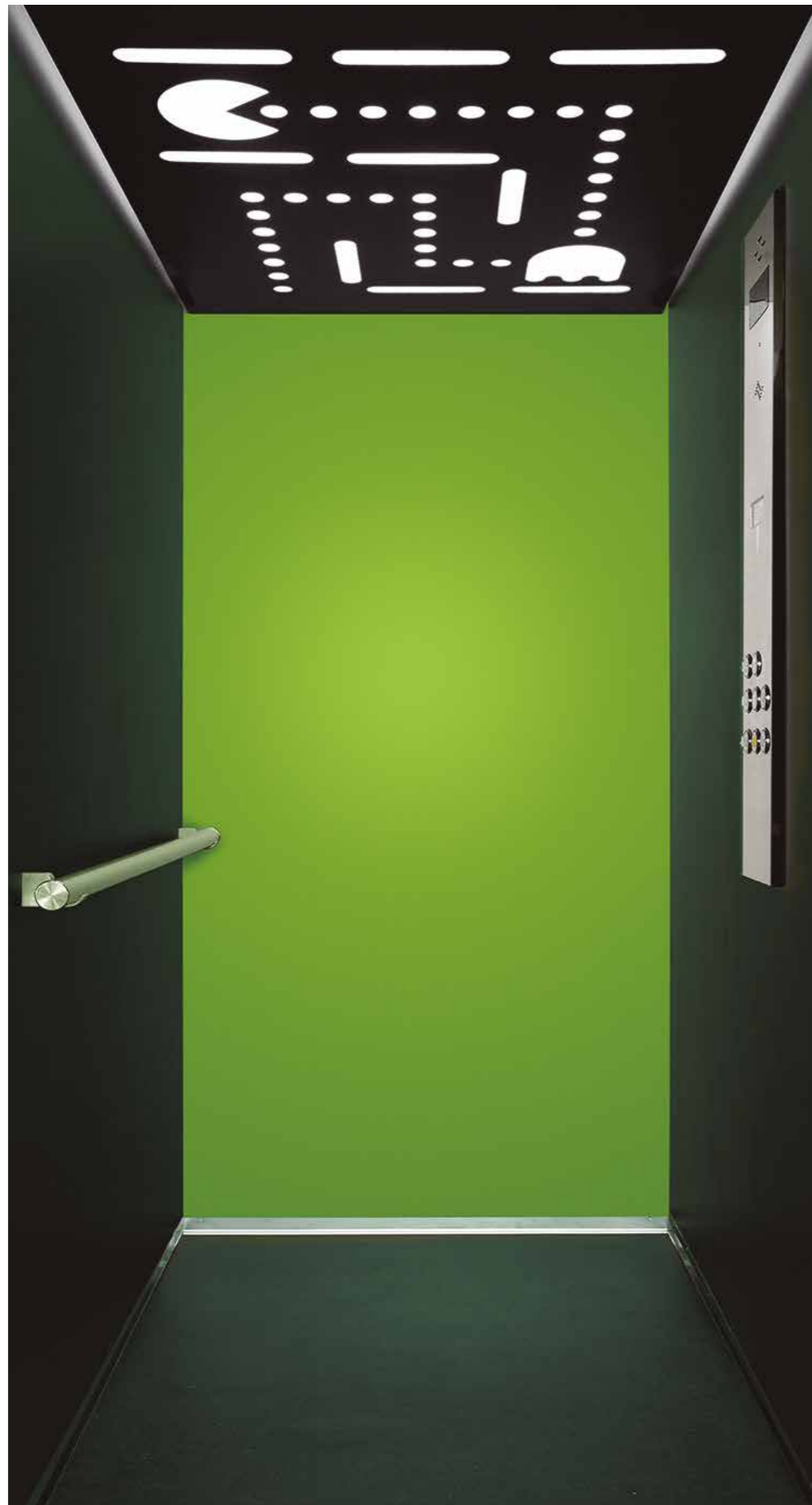
- Stainless steel panels
- Silver metallic floor
- Luxury Black button panel
- Power ceiling

*Handrail and mirror optional



Tokyo

Inspired by the colour, design and style of the Japanese capital.



Tokyo 1

- Black side panels
- Green background panel
- Midnight Black flooring
- Slim Inox button panel
- Pac-Man ceiling

*Handrail and mirror optional



Tokyo 2

- Grey side panels
- Red background panel
- Midnight Black floor
- Slim Inox button panel
- Striped ceiling 3

*Handrail and mirror optional



Tokyo 3

- Black side panels
- White background panel
- Midnight Grey floor
- Slim Inox button panel
- Smile ceiling

*Handrail and mirror optional



Tokyo 4

- Grey side panels
- Yellow background panel
- Midnight Black floor
- Slim Inox button panel
- Matrix ceiling

* Handrail and mirror optional

Melbourne

Inspired by the elegant hardwood from the forests of south-eastern Australia.



Melbourne 1

- Side panels
Bardolino oak
- Sand background panel
- Grey Cement floor
- Luxury Black button panel
- LED panoramic ceiling

* Handrail and mirror optional



Melbourne 2

- Walnut side panels
Natural Caribbean
- Grey background panel
- Silver metallic floor
- Luxury Black button panel
- Black WiFi ceiling

* Handrail and mirror optional



Melbourne 3

- Side panels
Desert Flames
- Sand background panel
- Grey Cement floor
- Luxury Black button panel
- LED panoramic ceiling

* Handrail and mirror optional



Melbourne 4

- Nordic Alp side panels
- Grey background panel
- Basalt Dunkle floor
- Luxury Black button panel
- Grey WiFi ceiling

* Handrail and mirror optional

Denver

Inspired by Colorado's spectacular Rocky Mountains.



Denver 1

- Slate panels
- Grey Maple floor with LED lighting
- Luxury White button panel
- Swift LED stainless steel ceiling

* Handrail, mirror and in-floor lighting optional



Denver 2

- Concrete panels
- Dunkle Ceramic floor with green LED lighting
- Luxury White button panel
- Ambition LED stainless steel ceiling

* Handrail, mirror and in-floor lighting optional



Denver 3

- Bronze metal panels
- Cotton Graumeliert floor
- Luxury White button panel
- Elegance LED stainless steel ceiling

* Handrail, mirror and in-floor lighting optional



New Jersey

Inspired by the glamour awakened by the mention of this legendary American city, this model is exceptional thanks to its sleek, all-stainless steel design.

- Stainless steel panels
- Midnight Black floor
- Slim Inox button panel
- Matrix ceiling

*Handrail and mirror optional

** Panel width depends on the size of the cabin



Panoramic cabin

In addition, Eninter offers you the most cutting-edge and original designs, bringing imagination to the fore.



Compactlift

Eninter's most personal lift. Created and designed to be installed in family homes or terraced houses. Its features allow it to be adapted to even the smallest spaces.

And also, choose from the following panels:

- Cream
- Grey
- Beech

Compactlift

- Concrete panels
- Midnight Black floor
- Horizontal Stainless Steel button panel
- LED Surface Sheet ceiling

* Handrail and mirror optional



Compactlift 2

- White Maple panels
- Midnight Grey floor
- Horizontal Stainless Steel button panel
- Spot LED Skin Stainless Steel ceiling

* Handrail and mirror optional



Compactlift 3

- Stainless Steel Lookalike panels
- Midnight Black floor
- Horizontal Stainless Steel button panel
- LED Surface Sheet ceiling

* Handrail and mirror optional



Compactlift 4

- Cherry panels
- Midnight Black floor
- Horizontal Stainless Steel button panel
- Spot LED Skin Stainless Steel ceiling

* Handrail and mirror optional

Accessories

In addition, the myriad accessories available for Eninter lifts have been designed to increase their comfort and safety.

Slim Inox line:

For cabins Tokio and New Jersey.



SLIM INOX

Luxury line:

For cabins: Melbourne, Denver and New York.



WHITE LUXURY



BLACK LUXURY



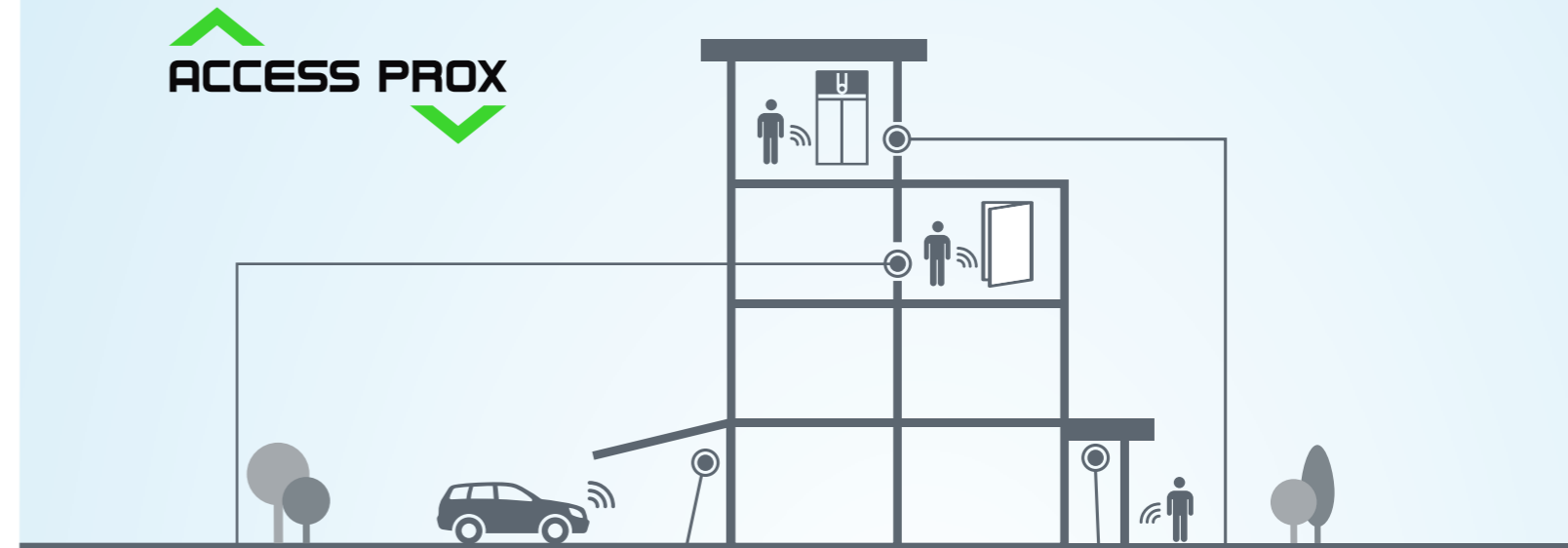
LED lighting

Save up to 50% on energy bills while enjoying greatly improved lighting compared to traditional systems. In addition, LED provides a warmer diffused light.



GSM telephone

For increased safety. Eninter operates this system without intermediaries. Compatible with every lift model. Cost is included in the maintenance bill.



GO BIO transmitter

The biometric GO BIO transmitter can be installed on the door or the wall and offers maximum safety, reliability and convenience for users.

Up to 10 fingerprints can be introduced. Simply place a finger on the reader and the doors that have been programmed will open.



Base Receptor

- Allows 30 to 500 codes to be managed
- Management of Admissions
- Gives access to the family of Radio Access keys



Proximity Readers

- Allows 30 to 500 codes to be managed
- Management of Admissions
- Give access to the family of Radio Access keys



MOTION Card. Access Prox Family

Reprogrammable passive 13.56 MHz, multifunctional proximity card.

- ISO format. Reprogrammable (read/write features)
- Laser-marked series number.
- Kill-Pass function and validity date function.
- Size: 55 x 87 x 1 mm



ECO Tag. Access Prox Family

- Passive 13.56 MHz proximity tag
- Keyring model
- Programmable only once
- Laser-marked series number
- Size 32 x 26 x 5 mm



GO EvoMini - GOEvo2 GOEvo4. Access Radio Family

EVO, or its equivalent, evolved from the combination of BI-TECHNOLOGY Radio + Prox transmitters. These transmitters are characterised by their functional dual technology. In addition to being programmable transmitters, they are also proximity keys, allowing the management of doors to be opened by radio or by proximity.

Eninter Design & Future The future is already here

Being ahead of its time, anticipating new demands, using cutting-edge technology, these are some of Eninter's main aspirations and the reason why a new department was recently created; Eninter Design & Future. Here, qualified technicians research and explore solutions that our market will need in the near future, encompassing Eninter's firm commitment to continue leading the industry in Spain.

Advantages of the Ecolift

High technology at the service of the environment

Eninter's concern for environmental sustainability and saving energy becomes a reality in Eninter's DESIGN & FUTURE department. There, research and the development of clean and energy-efficient solutions are developed.

Easy, very easy

ECOLIFT is an energy-efficient and functional lift, ideal for residential buildings that were constructed without a lift.

- **Easy to install.** Adaptable to any size. Available in a single-phase 220 V version (plug-in). No three-phase installation required, allowing for significant construction savings.
- **Safe in the case of a power failure.** It has a system that will move it in the direction favourable to the load to the next stop in the case of a power failure, allowing the easy evacuation of passengers.
- **Generates energy.** The lift generates energy on rides that are favourable to the load (upwards with empty loads and downwards with full loads). This energy can be managed as the client wishes. (To be studied in each case).

An environmentally-friendly lift

The ECOLIFT reduces nominal power up to 45%, significantly reducing CO₂ emissions into the atmosphere. ECOLIFT's traction system has sealed bearings and does not require any type of lubricant. This eliminates the need for polluting agents that traction systems with gear reducers require.

Comfort and quality of life

ECOLIFT is a lift whose machinery is gear-free. By eliminating the gear reducer from its design, the rubbing of the metal against metal of the gears is also eliminated, resulting in a quiet functioning and sound levels below

the standards required for lifts. A digital load sensor and motion control, with variable frequency positioned by an encoder (closed loop), ensure that the lift starts and stops smoothly.

Sudden changes in speed are eliminated. Today's latest generation electronic systems coupled with a revolutionary gear system ensure a high-precision stop with the cabin floor at practically the exact same level as the landing floor.

Excellent safety

- **Open lift shaft detection.** A special safety system prevents the lift from working when a landing door opens without the cabin being there.
- **Door-opening prevention device.** If for some reason the lift stops between floors, a special safety device prevents the cabin doors from opening without the proper rescue protocol being carried out.
- **Cabin access protection (optional).** An invisible infrared curtain at the access to the cabin that detects when an obstacle passes through it, immediately activating the reopening of the doors.

Having our own factory ensures the quality of our products

At Eninter we distribute our wide range of products from our factory in Cornellá. At our facilities we also come up with ideas and designs for the future. These unique creations will be manufactured and will be adapted to the most diverse needs. Our experience comes from having installed 10,000 lifts in newly constructed buildings and 1,600 in existing buildings. Having our own factory allows us to offer very tight delivery deadlines, and is how Eninter has managed to become the leading company in the sector in Spain.



Lift components



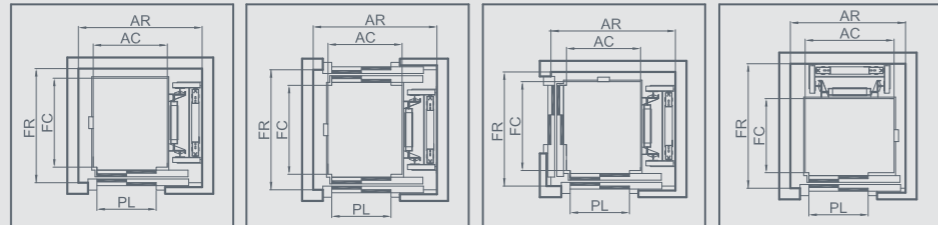
Technical information

			ECOLIFT 1.1	ECOLIFT 2.1	BIGLIFT	HIDROLIFT	COMPACTLIFT
GENERAL	Nominal Load (kg)	Minimum	180	320	180	180	180
		Maximum	750	1000	600	825	500
	Speed (mins/sec)	Minimum	0.4	0.4	0.4	0.4	0.10
		Maximum	1.2	1,6	1,0	0.63	0.15
	N° of stops	Minimum	2	2	2	2	2
		Maximum	32	32	32	32	6
	N° of boardings	Minimum	1	1	1	1	1
		Maximum	3	2	2	3	3
ENCLOSURE	Pit (mm.)	Minimum with standard	400	400	400	200	-
		Minimum	1200	1200	1200	1200	150 / 200*
	Escape (mm.)	Minimum with standard	-	2750	-	2400	-
		Minimum	3450	3450	3500	3450	2300
Distance (m.)	Minimum	-	-	-	-	-	
	Maximum	30	30	30	21	15	
MACHINE ROOM	Location Machinery	Lower floor	-	-	-	X	X
		Intermediate floor	-	-	-	0	0
		Upper floor	X	X	X	0	0
		Inner shaft	X	X	X	-	-
	Minimum size	700 x 400 x 1500 (mm.)	-	-	-	-	X
970 x 510 x 2160 (mm.)		-	-	-	X	-	
284 x 100 x 2200 (mm.)		X	X	X	-	-	
SHAFT	Pit shock absorbers	Non-linear PU	X	X	-	X	-
		Non-linear PU and dissipation of energy	-	-	X	-	-
	Cables	Cable diameter 6.5 mm.	X	X	X	X	-
		Cable diameter 8 mm.	X	X	X	X	X
		Cable diameter 10 mm.	-	-	-	X	-
	Speed limiter	Piston buffer valve	-	-	-	X	X
		Multipoint, ascending / descending action	X	X	X	-	-
	Buffer	Cable breakage	-	-	-	X	X
		One directional progressive	-	-	-	X	X
		Two directional progressive	X	X	X	-	-
	Outer doors	Semi-automatic	0	0	0	0	X
		Automatic	X	X	X	X	0
Suspension	1:1	X	-	X	X	-	
	2:1	0	X	X	X	X	
CABIN	Cabin doors	Photoelectric no door-barrier	-	-	-	-	X
		Bus	0	0	0	0	0
		Automatic	X	X	X	X	0
Floor area (m2)	Minimum	0.5	0.8	0.5	0.5	-	
	Maximum	1.9	2.4	1.60	2.05	2	
FINISHINGS	Display	TFT Cabin 4,3"	X	X	X	X	-
		TFT Cabin 7"	0	0	0	0	-
		Cabin (7 segments)	-	-	-	-	0
		Outer button panel 7 sec.	0	0	0	0	0
	Synthesiser	Voice synthesiser	0	0	0	0	-

X = From Series 0 = Optional * Only for 500 kg

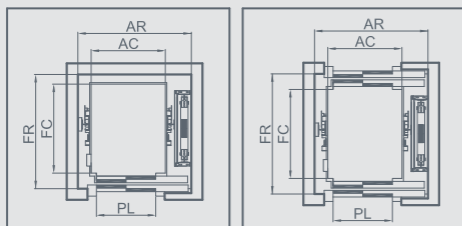
			ECOLIFT 1.1	ECOLIFT 2.1	BIGLIFT	HIDROLIFT	COMPACTLIFT
CONTROL	Brake power (V) DC	Brake power (V) DC	205	205	205	-	-
		Valve power (V) DC	-	-	-	48	24
	Motor supply	230/400 three-phase 50/60 Hz	X	X	X	X	X
		230V Single phase 50/60 Hz	0	0	0	-	X
	Cabinet size	284 x 100 x 2200 mm.	X	X	X	-	-
		304 x 200 x 600 mm.	-	-	-	-	X
		600 x 250 x 800 mm.	-	-	-	X	-
	Communication	Can Bus	X	X	X	X	-
		Wire to wire	-	-	-	-	X
	Control	Door opening time	0	0	0	-	-
		Precision stop (+/- mm.)	5	5	5	10	10
	Controller	Astarlift E13	X	X	X	X	-
		Astarlift E14	-	-	-	-	X
	Energy efficiency	Energy use when on standby (W)	70	70	-	49	40
		Cabin light timer	X	X	X	X	X
	Manoeuvre	Ascent or descent collective	X	X	X	X	-
		Ascent or descent selection (A / D)	0	0	0	0	-
		Universal	-	-	-	-	X
	Button press	Permanent	-	-	-	-	X
	Location	Machine cabinet	X	X	X	0	0
Machine room		0	0	0	X	X	
Next to the top floor access door		X	X	X	-	-	
TRACTION	Motor operation	2 speeds	-	-	-	-	X
		Variable frequency drive	X	X	X	0	-
	Adhesion	Gearless, synchronous motor with permanent	X	X	X	-	-
		Monitoring the state of the electro-mechanical brake	X	X	X	-	-
	Hydraulics	Main hydraulics with grouped electronic valves	-	-	-	X	0
	Motor power	Minimum to minimum load	1.3	1.5	1.3	4.5	2.2
		Maximum to maximum load	8	11	4.5	18	3
	Protection	Heat protection for motor	X	X	X	X	X
	Energy efficiency	Regeneration kit	0	0	0	-	-
	Control	Relevelling open door mode Sec.	-	-	-	X	X
Restricted access control	Acces Prox	0	0	0	0	0	
	Key	0	0	0	0	X	
Detection	Keyboard	0	0	0	0	0	
	Photoelectric barrier	0	0	0	0	0	
Arrangement of load weighing system device	Photocell button	X	X	X	X	X	
	Electronic/presostatic scales	X	X	X	X	X	
Emergency call device	Automatic, two-directional	X	X	X	X	0	
	Cabin emergency call device	X	X	X	X	0	
	Extra, wall-mounted telephone	-	-	-	-	X	
Emergency	Cabin stop	-	-	-	-	X	
	Emergency light in car	X	X	X	X	X	
Rescue system	Manual pump	-	-	-	X	X	
	Emergency descent manoeuvre	-	-	-	X	X	
	Manual descent button	-	-	-	X	X	
	Automatic active rescue service	0	0	0	0	0	
	Automatic favourable rescue	X	X	X	X	X	

Ecolift 1.1



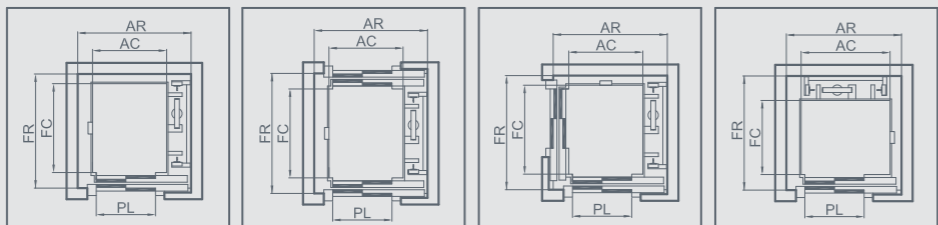
WEIGHT	STANDARD CABIN	STANDARD ENCLOSURE	CLEARANCE	STANDARD CABIN	STANDARD ENCLOSURE	CLEARANCE	STANDARD CABIN	STANDARD ENCLOSURE	CLEARANCE	CABIN	ENCLOSURE	CLEARANCE
300 kg	900 x 1000	1450 x 1250	700	900 x 1000	1450 x 1350	700	950 x 950	1600 x 1300	700	950 x 950	1300 x 1600	700
450 kg	1000 x 1250	1550 x 1500	800	1000 x 1250	1550 x 1600	800	1000 x 1250	1650 x 1500	800	1250 x 1000	1450 x 1650	800
630 kg	1100 x 1400	1650 x 1650	900	1100 x 1400	1650 x 1750	900	1100 x 1400	1750 x 1650	900	1400 x 1100	1550 x 1750	900
825 kg				1400 x 1400	2100 x 1650	900						

Ecolift 2.1



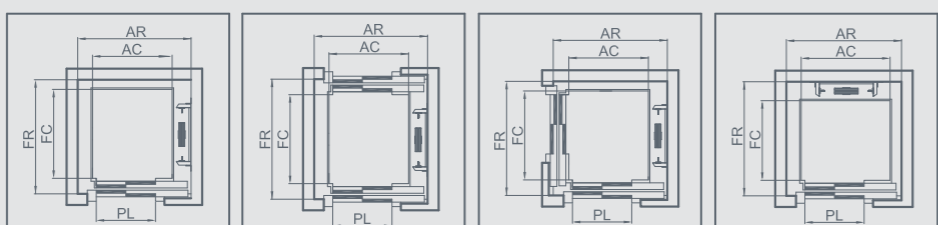
WEIGHT	STANDARD CABIN	STANDARD ENCLOSURE	CLEARANCE	STANDARD CABIN	STANDARD ENCLOSURE	CLEARANCE
300 kg	900 x 1000	1450 x 1250	700	900 x 1000	1450 x 1350	700
450 kg	1000 x 1250	1550 x 1500	800	1000 x 1250	1550 x 1600	800
630 kg	1100 x 1400	1650 x 1650	900	1100 x 1400	1650 x 1750	900
825 kg	1200 x 1600	1800 x 1850	900	1200 x 1600	1800 x 1950	900
1000kg	1100 x 2150	1750 x 2400	900	1100 x 2150	1750 x 2500	900
	1400 x 1700	2050 x 2000	900	1400 x 1700	2050 x 2100	900

Hidrolift



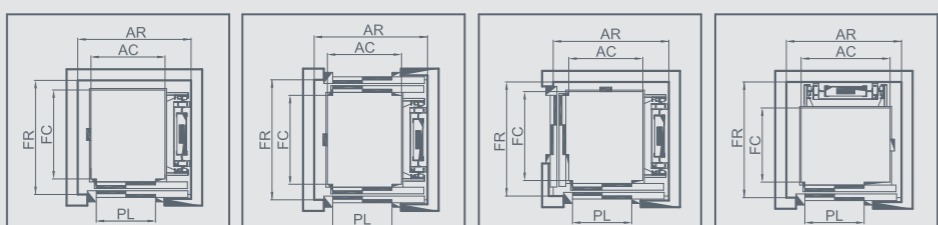
WEIGHT	STANDARD CABIN	STANDARD ENCLOSURE	CLEARANCE	STANDARD CABIN	STANDARD ENCLOSURE	CLEARANCE	STANDARD CABIN	STANDARD ENCLOSURE	CLEARANCE	CABIN	ENCLOSURE	CLEARANCE
300 kg	900 x 1000	1300 x 1250	700	900 x 1000	1300 x 1350	700	950 x 950	1500 x 1300	700	950 x 950	1300 x 1500	700
450 kg	1000 x 1250	1450 x 1500	800	1000 x 1250	1450 x 1600	800	1000 x 1250	1550 x 1500	800	1250 x 1000	1450 x 1500	800
630 kg	1100 x 1400	1600 x 1650	900	1100 x 1400	1600 x 1750	900	1100 x 1400	1700 x 1650	900	1400 x 1100	1600 x 1650	900
825 kg	1200 x 1600	1600 x 1850	900	1200 x 1600	1600 x 1950	900	1400 x 1400	1900 x 1650	900	1400 x 1400	1600 x 1900	900

Compactlift



WEIGHT	STANDARD CABIN	STANDARD ENCLOSURE	CLEARANCE	STANDARD CABIN	STANDARD ENCLOSURE	CLEARANCE	STANDARD CABIN	STANDARD ENCLOSURE	CLEARANCE	CABIN	ENCLOSURE	CLEARANCE
250 kg	900 x 1000	1250 x 1250	700	900 x 1000	1250 x 1350	700	950 x 950	1350 x 1350	700	950 x 950	1300 x 1350	700
300 kg	1000 x 1250	1400 x 1500	800	1000 x 1250	1400 x 1600	800	1000 x 1250	1400 x 1550	800	1250 x 1000	1450 x 1400	800
385 kg	1100 x 1400	1550 x 1650	900	1100 x 1400	1550 x 1750	900	1100 x 1400	1500 x 1650	900	1400 x 1100	1600 x 1500	900

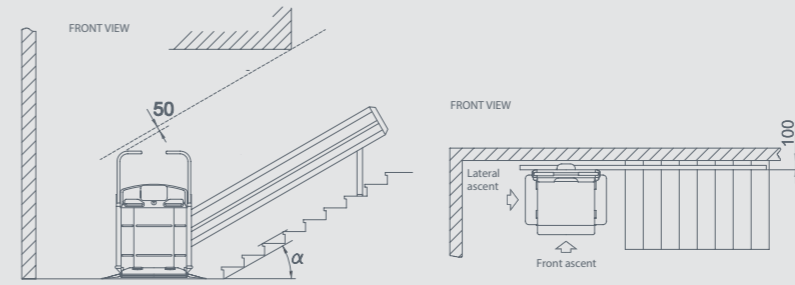
Biglift



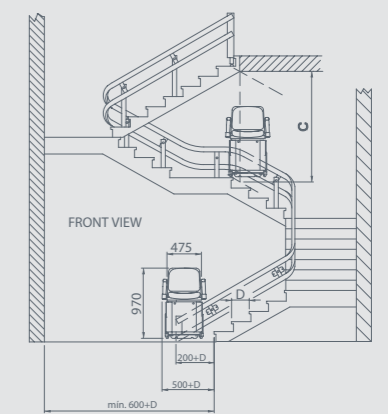
WEIGHT	STANDARD CABIN	STANDARD ENCLOSURE	CLEARANCE	STANDARD CABIN	STANDARD ENCLOSURE	CLEARANCE	STANDARD CABIN	STANDARD ENCLOSURE	CLEARANCE	CABIN	ENCLOSURE	CLEARANCE
300 kg	900 x 1000	1350 x 1250	700	900 x 1000	1350 x 1350	700	950 x 950	1500 x 1300	700	950 x 950	1300 x 1500	700
450 kg	1000 x 1250	1450 x 1500	800	1000 x 1250	1450 x 1600	800	1000 x 1250	1600 x 1500	800	1250 x 1000	1450 x 1550	800
630 kg	1100 x 1400	1600 x 1650	900	1100 x 1400	1600 x 1750	900	1100 x 1400	1700 x 1650	900	1400 x 1100	1600 x 1650	900

Straight section platform stair lift Model V64

Gradients of up to 45°

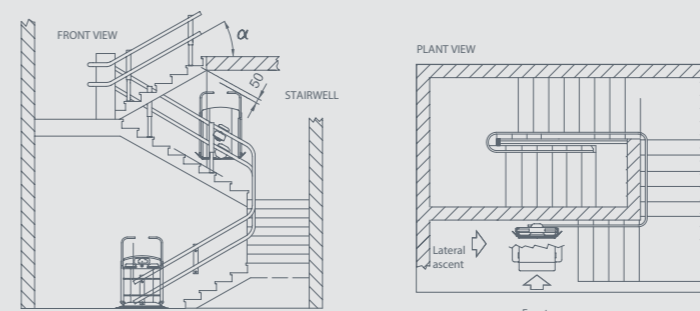


Chair stair lift Model V53

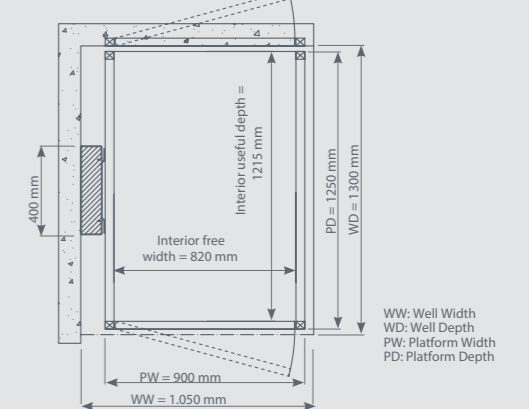


Curved platform stair lift Model V65

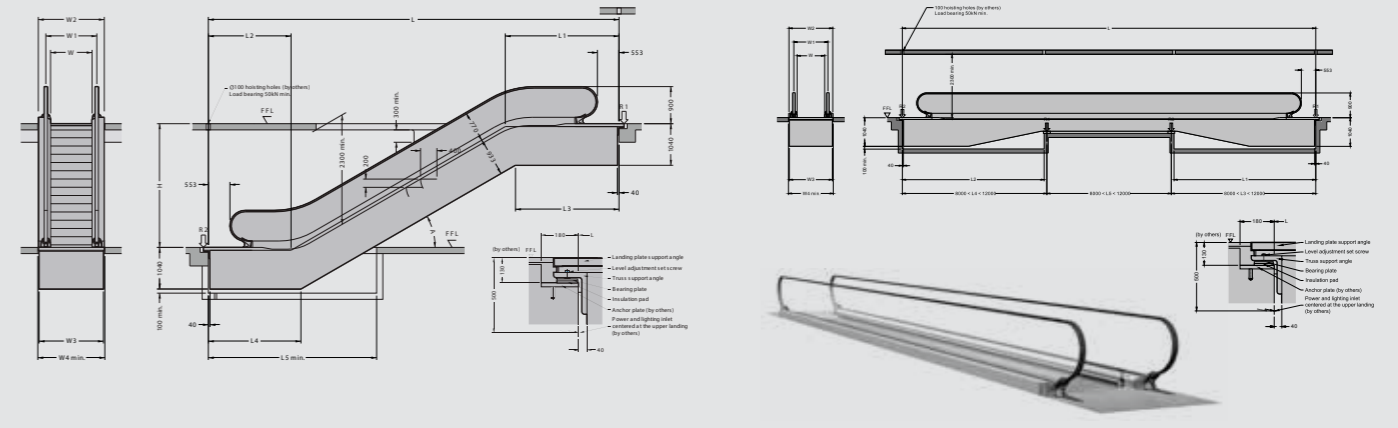
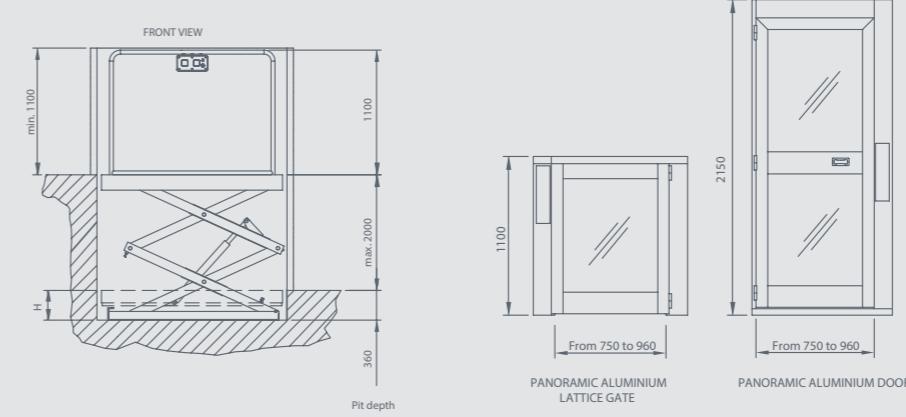
*Up to 250 kg with gradient of up to 45° and up to 200 kg with steeper gradient



Vertical platform stair lift StairLifts



Vertical platform stair lift Model A28



Escalators and moving walkways

		ESCALATORS	MOVING WALKWAYS
MAIN FEATURES	Reference standard	EN115	EN115
	Incline angle (degrees)	30 - 35	0 - 12
	Useable width of step or plate (mm.)	600-1000	800 - 1400
	Nominal speed (mins/sec)	0.5 - 0.75	0.5 - 0.75
	Capacity (people/hour)	4500 - 9000	6750 - 9000
	Type of handrail	Glass - Steel	Glass - Steel
	Useable height of handrail (mm)	900	900
	Type of installation	Interior - Exterior	Interior
GENERAL FEATURES	Arrangement of stairs or corridors	Single - Parallel - Scissor	Single - Parallel - Scissor
	Anti-rust treatment of the chassis	Optional	Optional
	Colour of the steps or plates	Grey - Black	Grey - Black
	Non-slip treatment of the steps or plates	Optional	Optional
	Comb colour	Aluminium or Yellow	Aluminium or Yellow
	Colour of skirt guard	Stainless steel	Stainless steel
	Finishing / Colour of handrail	Clear glass or Stainless steel	Clear glass or Stainless steel
	Colour of handrail	Black series, other colours optional	Black series, other colours optional
	Covering material	Stainless steel	Stainless steel
	Supply voltage (V)	400 III 50HZ	400 III 50HZ
	Location of the control panel	Upper pit series, other spaces optional	Upper pit series, other spaces optional
	Material of the control panel	Painted steel	Painted steel
	Main switch	Series	Series
	Energy-free contacts	Series	Series
	Motor power (kWh)	De 5.5 a 2 x 15	De 5.5 a 2 x 15
	Incoming and outgoing passenger sensor	Optional	Optional
	Control with VVVF	Optional	Optional
	Voice synthesiser on transition curve	Optional	Optional
Passenger detection strip	Optional	Optional	
OUTER DOOR	Sides	Steel to be painted series / stainless steel	Steel to be painted series / stainless steel
	Ceiling under stairs	Steel to be painted series / stainless steel	Steel to be painted series / stainless steel
LIGHTING	Combs	Optional	Optional
	Handrail	Optional	Optional
	Skirt guard	Optional	Optional
	Outer covering	Optional	Optional
SAFETY FEATURES	Auxiliary brake	Optional	Optional
	Brake opening detection	Series	Series
	Safety device for transmission of chain breakage	Series	Series
	Safety device for transmission of steps or plates	Series	Series
	Device for obstruction of comb	Series	Series
	Protection for electrical circuits	Series	Series
	Electro-mechanical brake	Series	Series
	Emergency button	Series	Series
	Safety device for insertion of objects at handrail ends	Series	Series
	Monitoring device for handrail speed	Series	Series
	Protection against overspeeding	Series	Series
	Protection against phase error or inversion	Series	Series
	Protection against inversion of movement	Series	Series
	Skirt guard deformation device	Series	Series
	Skirt guard obstruction device	Series	Series
	Step demarcation lighting	Series	Series
	Monitoring device for horizontality of steps or plates	Series	Series
	Detection device for missing step	Series	Series
	Sprinklers	Optional	Optional
	Comb heater	Optional	Optional
	Chassis heater	Optional	Optional
	Oil capture tray	Series	Series
Chain transmission over	Series	Series	



Carretera de L'Hospitalet, 52
Tel: +34 933 779 451
conoce@eninter.com
08940 Cornellá de Llobregat
Barcelona, España

24 hour helpline
902 252 209
www.eninter.com